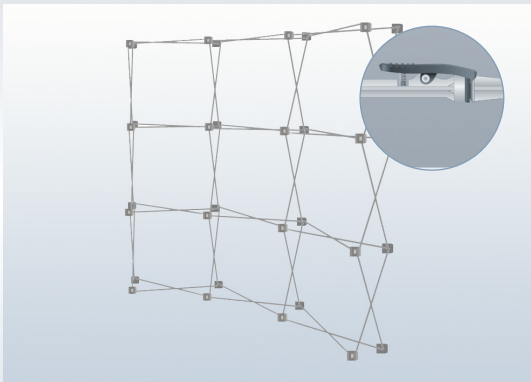




SET UP
INSTRUCTION
POP UP MAGNETIC

expolinc
Opportunities on display

1



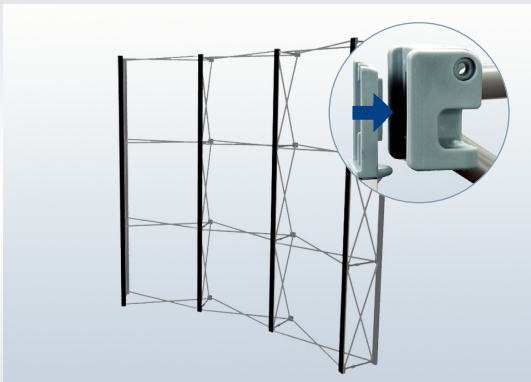
Expand the system and make sure that the lockers click in each other.

2



Unfold one magnetic bar at the time.

3



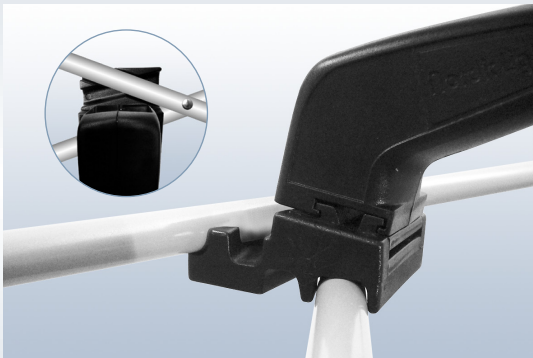
Click the magnetic bar into the hubs of the system. Repeat until all the magnetic bars are in place.

4



Click the hangers on top of each graphic panel onto the magnetic slot located on the magnetic bars. Let the panel fall down into place.

5



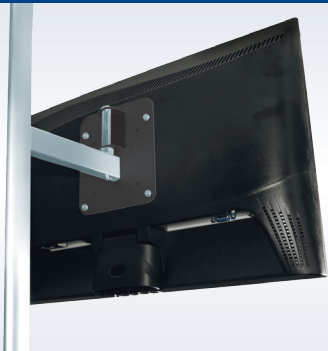
Attach the lights to the top scissor of the system. The tracks in the spotlight fastener will guide it to the proper location.

6



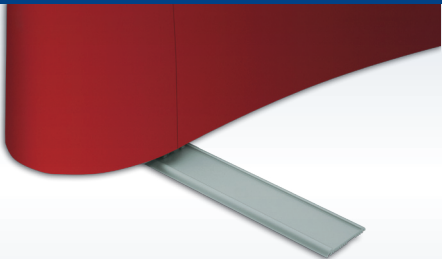
Check that all graphic panels are flat. Adjust as needed by gently smoothing with your hand.

ACCESSORIES



Screen Holder gives the possibility to show moving pictures.

ACCESSORIES



Stabilising feet to increase the stability is recommended when using a Screen Holder.